

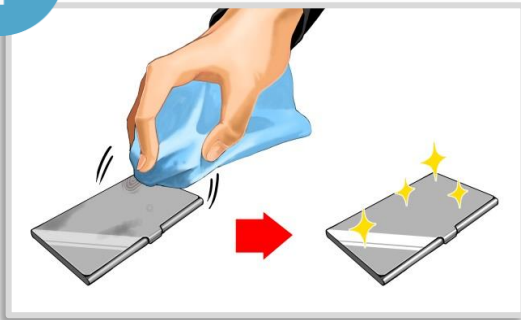
Instructions for MIYAKO ALUMI.

- Your work object (made of aluminum)
- MIYAKO ALUMI
- color paint(s)
- Alcohol
- Newspaper or magazines
- Masking tape (for partial painting)
- Waste cloths or old rags
- Hair dryer (for thermal drying)

Cautions

Never use during pregnancy or while breast feeding.
Only use outdoors or in well ventilated areas.
Keep this product away from fire.

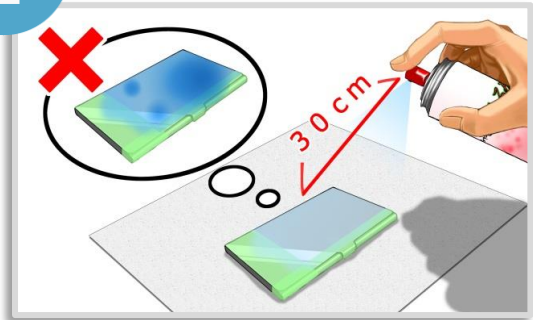
Step
1



Empty your object and wipe all surfaces free of any dust, grease or fingerprints.

For partial coating, use masking tape to mask off any areas you don't want painted.

Step
2

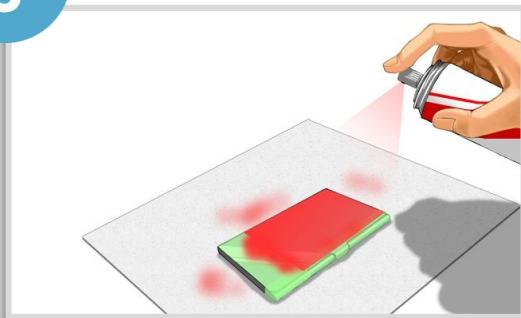


Lay down some newspaper or magazines and place your object on them. Give the container a good shake and spray evenly on desired section, holding it about 30 centimeters away from the surface. It takes 15 minutes to dry naturally. Check if it is dry to the touch.

Tip:

For best results,
don't apply in heavy coats.

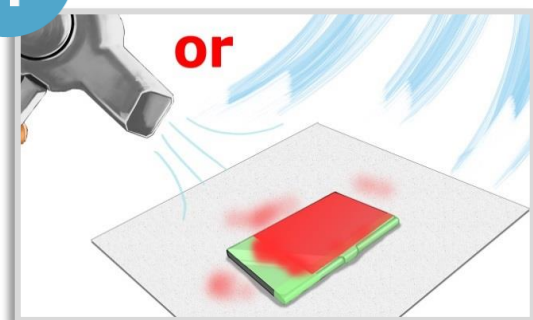
Step
3



Apply your paint(s). Before applying, carefully read any instructions.

Don't brush too hard when you apply paint with a brush. Over brushing can cause MIYAKO ALUMI to peel.

Step
4



Dry the paint. Allow to dry naturally or use hair dryer for thermal drying.